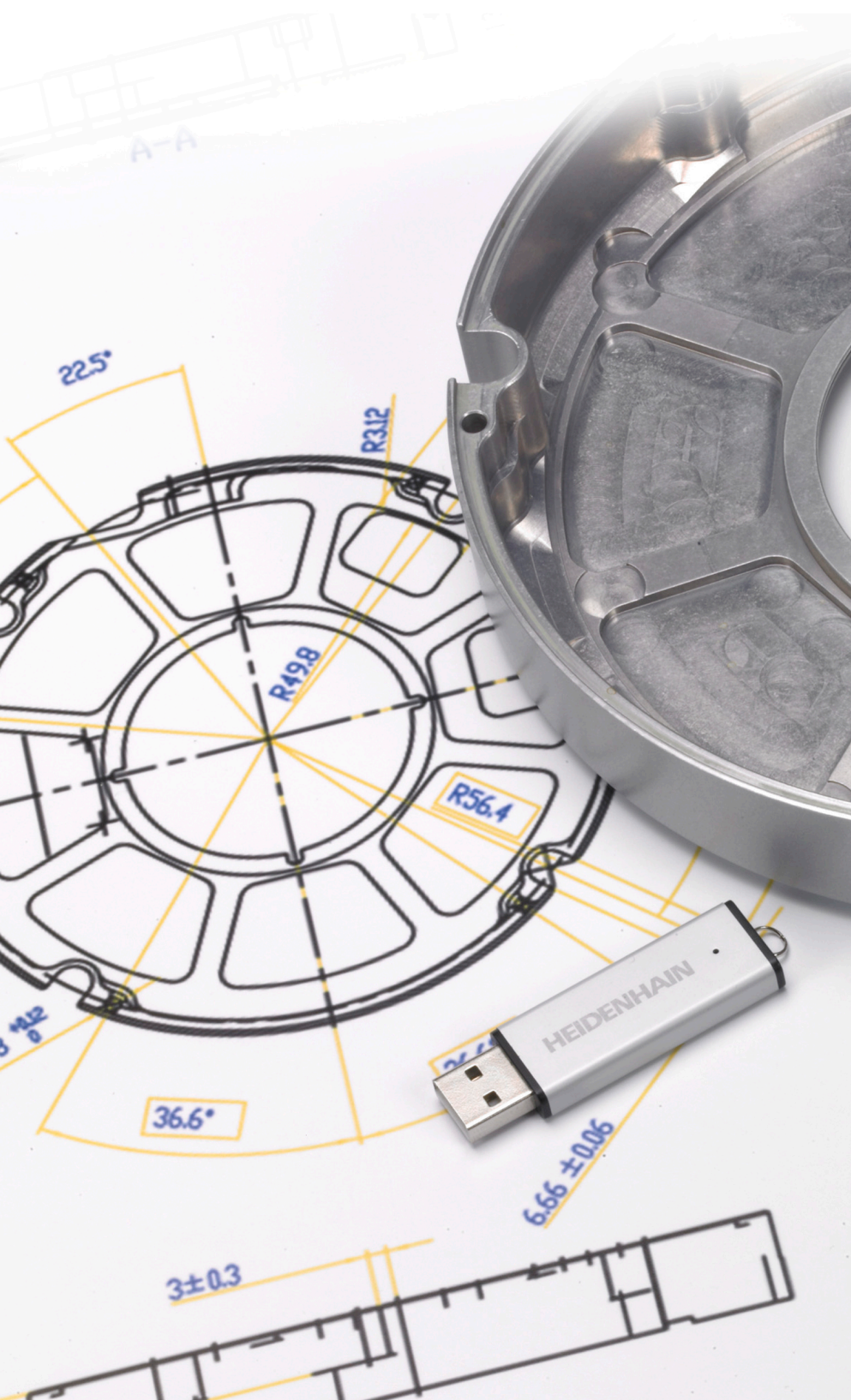




HEIDENHAIN



NC Solutions

Set di disegni 13003

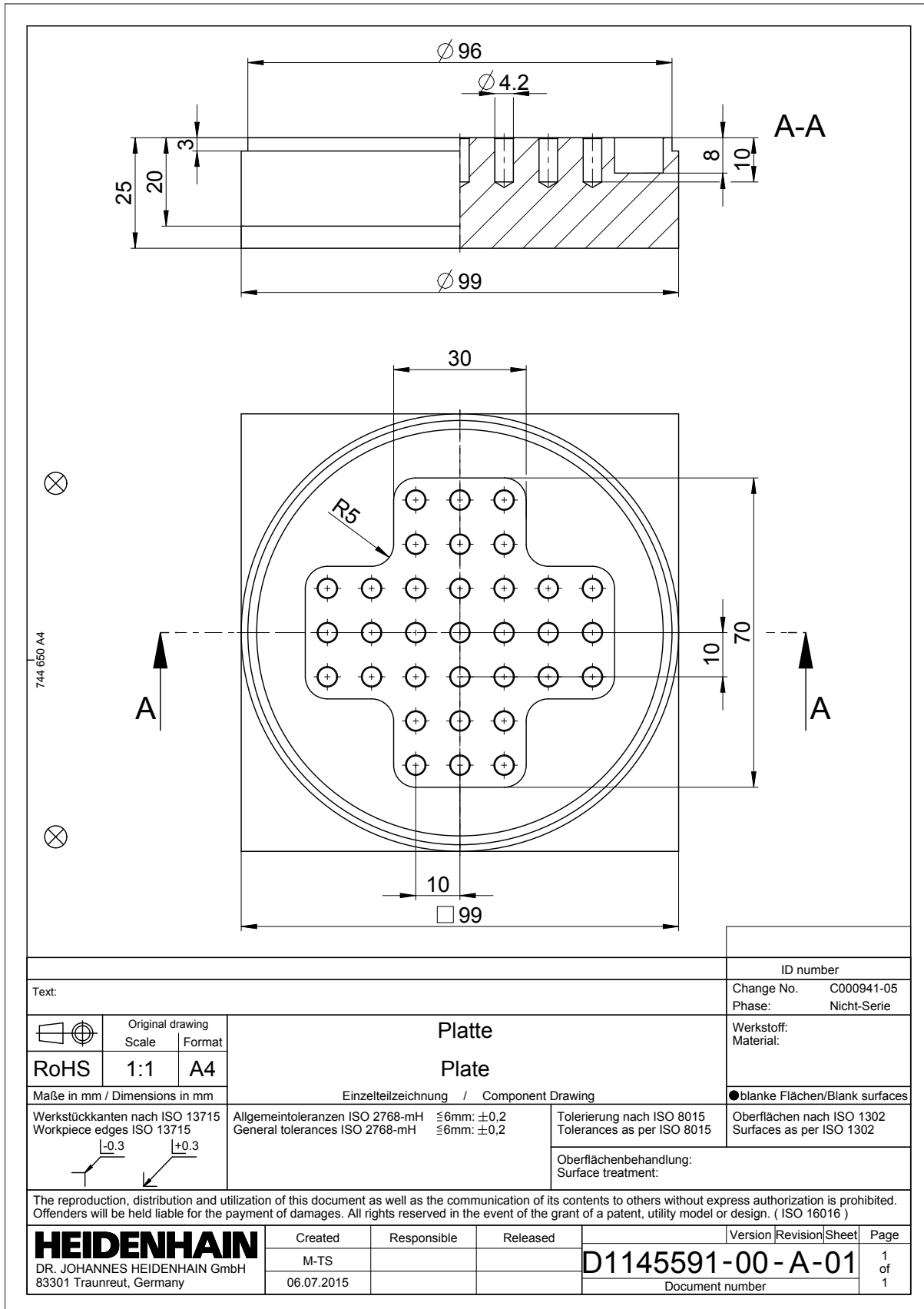
Italiano (it)
4/2017

1 Set_disegni_13003

Disegno coperchio

Text:		ID number							
Change No. C000941-05		Phase: Nicht-Serie							
Werkstoff: Material:		●blanke Flächen/Blank surfaces							
<table border="1"> <tr> <th>Original drawing</th> <th>Scale</th> <th>Format</th> </tr> <tr> <td>RoHS</td> <td>1:1</td> <td>A4</td> </tr> </table>	Original drawing	Scale	Format	RoHS	1:1	A4	Welle Shaft		Einzerteilzeichnung / Component Drawing
Original drawing	Scale	Format							
RoHS	1:1	A4							
Maße in mm / Dimensions in mm Werkstückkanten nach ISO 13715 Workpiece edges ISO 13715	Allgemeintoleranzen ISO 2768-mH General tolerances ISO 2768-mH	Tolerierung nach ISO 8015 Tolerances as per ISO 8015	Oberflächen nach ISO 1302 Surfaces as per ISO 1302						
	Oberflächenbehandlung: Surface treatment:								
The reproduction, distribution and utilization of this document as well as the communication of its contents to others without express authorization is prohibited. Offenders will be held liable for the payment of damages. All rights reserved in the event of the grant of a patent, utility model or design. (ISO 16016)									
HEIDENHAIN DR. JOHANNES HEIDENHAIN GmbH 83301 Traunreut, Germany	Created	Responsible	Released						
	M-TS								
06.07.2015	D1145556-00-A-01		Version Revision Sheet Page 1 of 1						
Document number									

Disegno parte inferiore



Text:			ID number										
Change No. C000941-05			Phase: Nicht-Serie										
<table border="1"> <tr> <td></td> <td>Original drawing</td> <td></td> </tr> <tr> <td></td> <td>Scale</td> <td>Format</td> </tr> <tr> <td>RoHS</td> <td>1:1</td> <td>A4</td> </tr> </table>				Original drawing			Scale	Format	RoHS	1:1	A4	<p style="text-align: center;">Platte Plate</p> <p style="text-align: center;">Einzelteilzeichnung / Component Drawing</p>	
	Original drawing												
	Scale	Format											
RoHS	1:1	A4											
Maße in mm / Dimensions in mm			●blanke Flächen/Blank surfaces										
Werkstückkanten nach ISO 13715 Workpiece edges ISO 13715 			Tolerierung nach ISO 8015 Tolerances as per ISO 8015 Oberflächen nach ISO 1302 Surfaces as per ISO 1302										
Allgemeintoleranzen ISO 2768-mH $\leq 6\text{mm}$: $\pm 0,2$ General tolerances ISO 2768-mH $\leq 6\text{mm}$: $\pm 0,2$			Oberflächenbehandlung: Surface treatment:										
The reproduction, distribution and utilization of this document as well as the communication of its contents to others without express authorization is prohibited. Offenders will be held liable for the payment of damages. All rights reserved in the event of the grant of a patent, utility model or design. (ISO 16016)													
HEIDENHAIN DR. JOHANNES HEIDENHAIN GmbH 83301 Traunreut, Germany		Created	Responsible	Released	Version Revision Sheet Page								
		M-TS			D1145591-00 - A-01 1 of 1								
		06.07.2015			Document number								